



**SEPARATOR**

A BAUER GROUP COMPANY

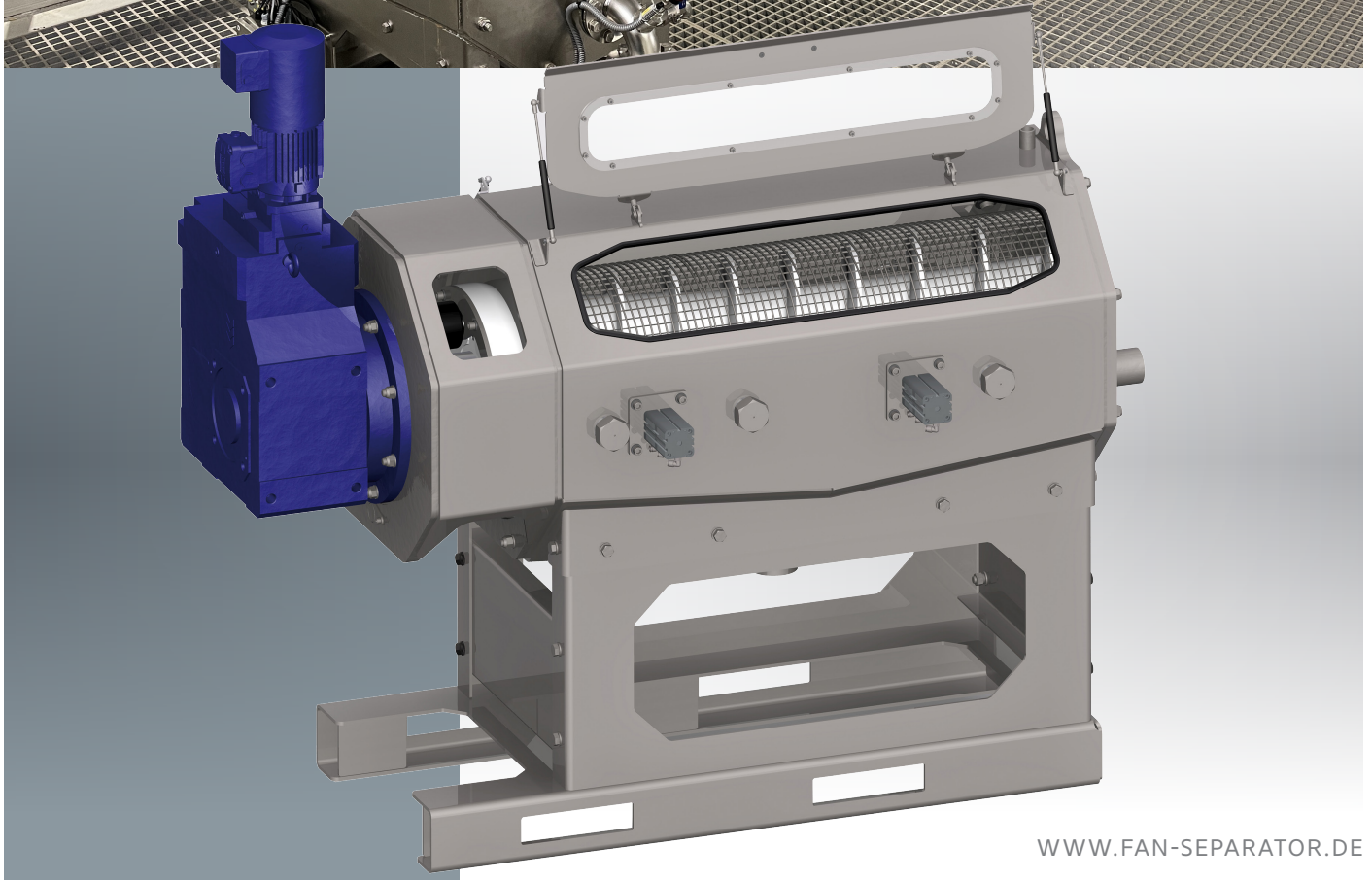
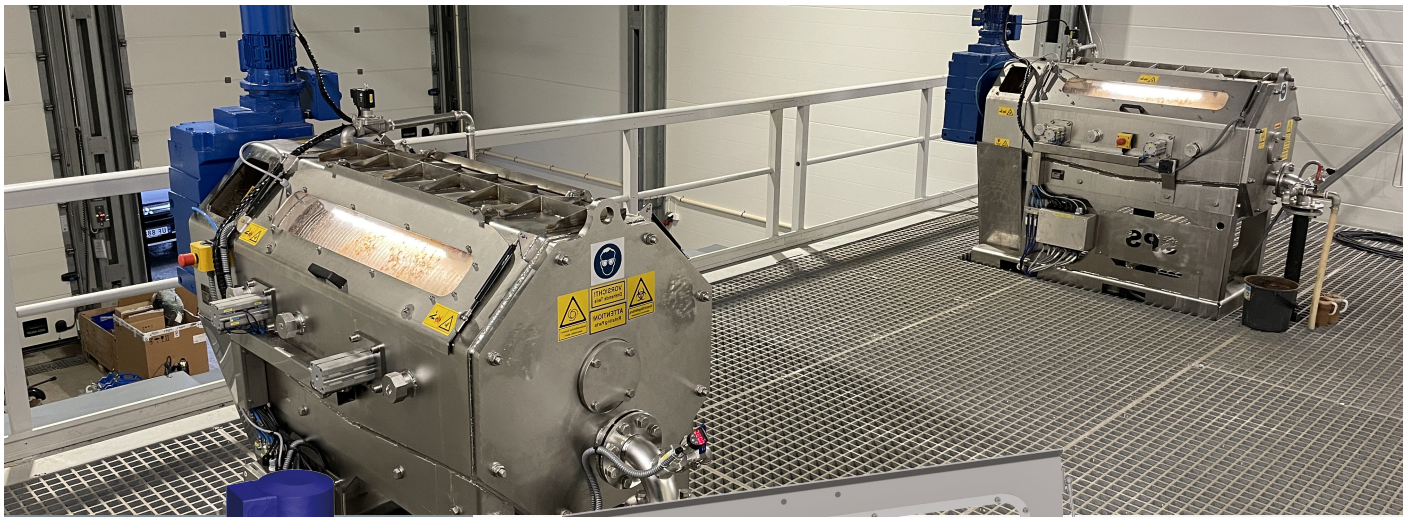
EN



WASTE WATER TREATMENT

# SLUDGE SEPARATOR SPS

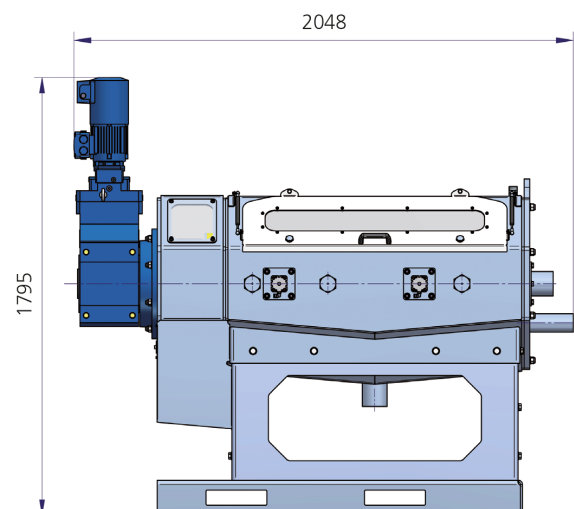
DEWATERING OF BIOLOGICAL SLUDGE WITH A LOW FIBER CONTENT

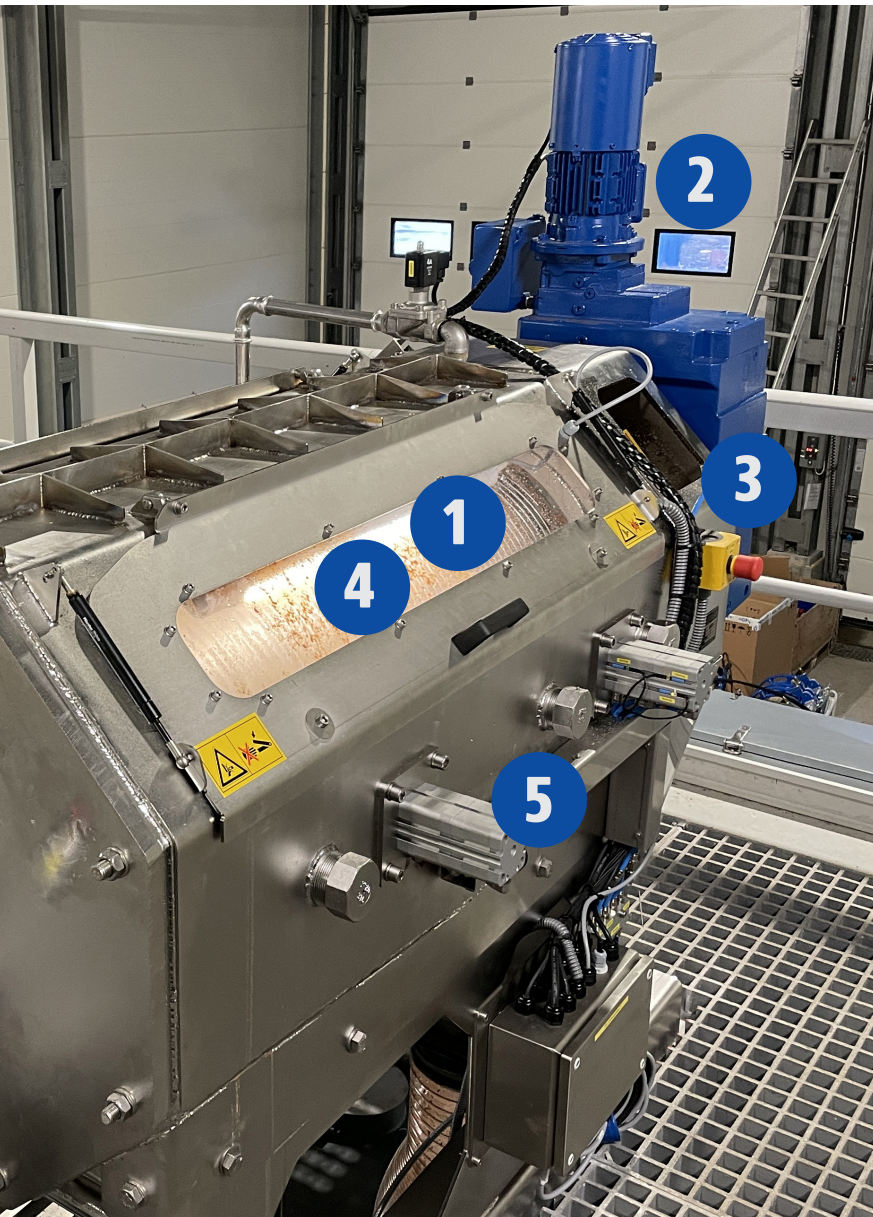


# SLUDGE SEPARATOR SPS

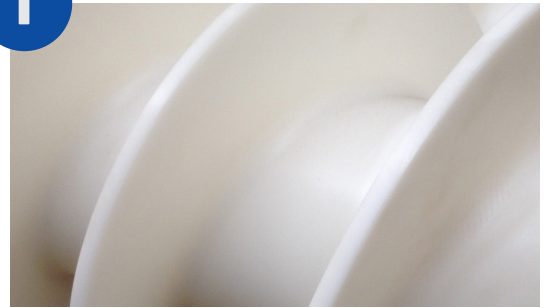
## Sludge separator for dewatering of sludges

- Dry matter content of the separated biological sludge, with up to 30% DM
- Continuous cleaning of the screens by the auger
- Low maintenance requirements with minimal wear for low operating costs
- Low power consumption of 0.55 kW at low speed
- Screen housing of stainless steel
- Auger with special geometry for sludge separation
- Screens made of stainless steel
- Significant savings on operating costs
- Reduced disposal costs
- Maintenance-friendly
- Low power consumption
- Low-noise operation



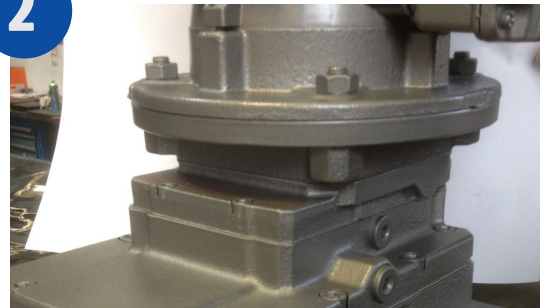


1



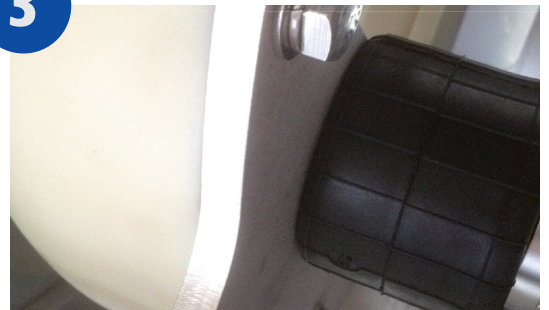
Auger made of high-performance plastic with special drainage geometry

2



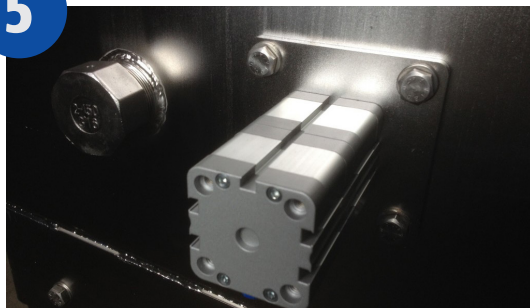
Quality gearbox with drive at low power of only 0.55 kW

3



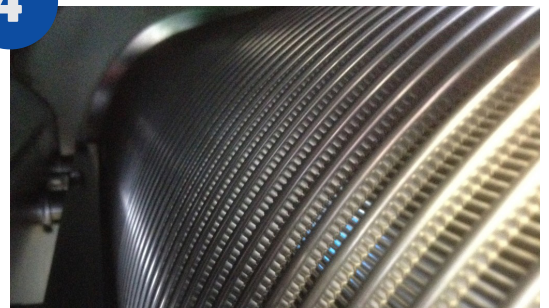
Fully automatic discharge regulation for consistently high DM content in the solids

5



Mechanism for fully automatic washing of the screen during operation (patent pending)

4



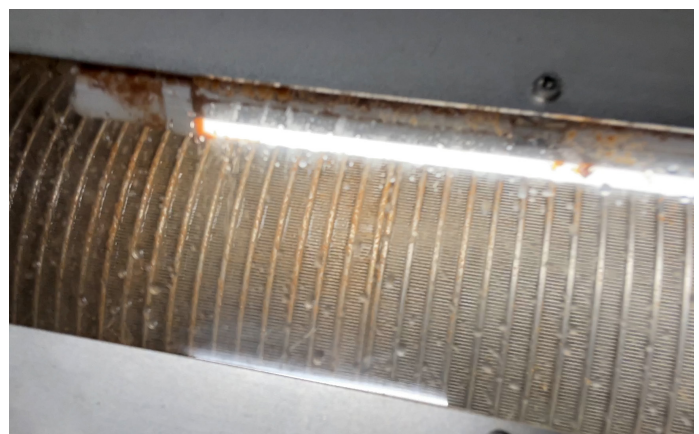
Low-wear precision screens

### Technical data:

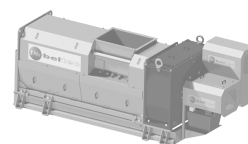
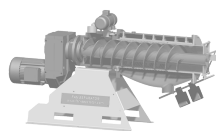
|                    |                           |
|--------------------|---------------------------|
| Throughput         | up to 3 m <sup>3</sup> /h |
| Dry matter content | up to 30%                 |
| Medium-temperature | 0 °C up to max. 40 °C     |
| Connection power   | 0.55 kW                   |

### Applications

- Municipal waste-water treatment plants
- Industrial waste-water treatment plants



## BEST VALUE SEPARATION PRODUCTS



Your Dealer

### FAN Separator GmbH

Bernecker Straße 5, 95509 Marktschorgast, Germany

**T** +49 9227 938-400

**F** +49 9227 938-444

**M** info@fan-separator.de

**W** www.fan-separator.de